

## TRAFFIC AND TRANSPORT MANAGEMENT PLAN



This Traffic and Transport Management Plan has been prepared by CarParkAt Ltd, trading as CPA Events.

Event Category: **A**

Document Status: **DRAFT**

Version: **3**

Notes: **Traffic management plan for events with a capacity of up to 9,999 finishing at 23.00**

VENUE NAME	DRUMSHEDS
LOCATION	DRUMSHEDS MERIDIAN WATER 4-6B ORBITAL BUSINESS PARK 5 ARGON ROAD LONDON N18 3BW

Prepared by **CPA Events** for and on behalf of **Broadwick Venues**

CPA Events  
120 Screenworks  
London  
N5 2EF  
www.cpa-events.com

This document and all its contents are protected by copyright. This document remains the sole property of CarParkAt Ltd, trading as CPA Events. CarParkAt Ltd disclaims any responsibility to the client and others in respect of any matters outside the scope of this document. The document has been compiled with all reasonable due care and diligence within the terms of the contract with the client and the limitations of the information provided to us. This document is issued to the client with our standard terms and conditions of business and is valid for the event specified and no other. This document is in **DRAFT** form until such time that it says **FINAL** on the front cover. This document runs in conjunction with our standard terms and conditions, a copy of which is available upon request.

**VERSION CONTROL**

DOCUMENT REFERENCE		PREPARED BY			
REFERENCE: DSMWTMP2019 // 9,999 (23.00 finish) VERSION: V3		Ben Jones ben@cpa-events.com			
VERSION CONTROL	DOCUMENT REFERENCE	ISSUED DATE	STATUS	CHECKED BY	NOTES
1	DSMWTMP2019 // 9,999 (23.00 finish)	03/6/19	DRAFT	BG	UPDATED MASTER PLAN DOCUMENT FOR EVENTS WITH A 9,999 CAPACITY FINISHING AT 23.00.
2	DSMWTMP2019 // 9,999 (23.00 finish)	18/6/19	DRAFT	BG	UPDATED MASTER PLAN DOCUMENT FOR EVENTS WITH A 9,999 CAPACITY FINISHING AT 23.00.
3	DSMWTMP2019 // 9,999 (23.00 finish)	2/7/19	DRAFT	BG	ADDED TABLE 4, PG27.

## CONSULTATION LIST

The table below details the stakeholders to be involved in the planning stages of this traffic and transport management plan, additional stakeholders may be added in future versions of this document.

AGENCY	ROLE	NAME(S)
CPA Events	Traffic Management	Ben Jones Brian Goodwin
Broadwick Venues	Venue Management	Sam Spencer James Dutton Jon Drape Matthew Johnson Simon Tracey
TfL LSTCC / NMCC	TfL Streets	Sophie Spurgeon
London Underground	London Underground // Tottenham Hale	Stephen Priestley Mark Cotter
Greater Anglia Trains	National Rail Services // Meridian Water	Keith Palmer Rob Turner
London Borough of Enfield Safety Advisory Group	Safety Advisory Group	Esther Hughes
Metropolitan Police	Police	Andy Underwood Lyndsey Holt Helena Gibson
British Transport Police	Transport Police	Derek Worsfold Robert Maulini
Showsec	Security and Crowd Management Contractor	Paul Legge Simon Howard
Enfield Highways	Highways	Paul Wilkins Paul Coppin
Haringey Highways	Highways	James Winsley Frank Daly
TfL Buses	London Buses	David Hooker
AA Signs	Traffic Management	Bobby Walker
TfL Taxis and Private Hire	Rank Liaison Officer	Nicole Harris
Taxi Marshal Events	Taxi Marshals	Tony Ellis
Enfield Regeneration Meridian Water	Regeneration Officer	Afraa Ali Clive Tritton
Enfield Council Transport	Transport Consultant	John Baker
Schofield Lothian	Transport Consultant	Roland Anderson
Lee Valley	Lee Valley Park Events	Charlie Muir
Enfield Parking	Parking Enforcement	David Morris
Waltham Forest Parking	Parking Enforcement	Mehmet Hassan
Haringey Parking	Parking Enforcement	Steve Cook

# CONTENTS

---

## OVERVIEW AND LOCAL TRANSPORT NETWORK

Venue Information and Overview  
Venue, Road Network and Transport Links

## TRAFFIC AND TRANSPORT MANAGEMENT PLAN

9,999 Capacity Events // 23.00 Finish time

## SUMMARY

## TABLES

TABLE NUMBER	DESCRIPTION
1	Venue Information
2	9,999 Capacity // Mode Share Projection
3	9,999 Capacity // Overview of Traffic Management Provisions
4	Contingency Plans

## OVERVIEW AND LOCAL TRANSPORT NETWORK

---

**TABLE 1: VENUE INFORMATION**

ITEM	INFORMATION
VENUE NAME(S)	DRUMSHEDS
VENUE EVENT CATEGORY	<b>CATEGORY: A</b> 9,999 CAPACITY EVENTS FINISHING AT 23.00
SITE LOCATION	DRUMSHEDS MERIDIAN WATER 4-6B ORBITAL BUSINESS PARK 5 ARGON ROAD LONDON N18 3BW

### OVERVIEW

This document has been prepared by CPA Events for and on behalf of Broadwick Venues. The document sets out a framework for the management of transport for events with a capacity of up to 9,999, proposed to be held at the Drumsheds venue in Meridian Water in the London Borough of Enfield.

The plan will focus on the following areas:

- Access to and from the venue.
- Access to and from local public transport facilities.
- Provisions to be put in place to facilitate the safe access of persons to and from the venue.

This document is in draft form as a working document prepared through a process of engagement through the London Borough of Enfield Safety Advisory Group, which includes stakeholders from: London Underground; Greater Anglia Trains; Metropolitan Police; British Transport Police; LB Enfield Highways; LB Haringey Highways and TfL Buses.

For the purpose of this document the terms traffic and transport are used interchangeably. This document has been informed by HSG 195 'the event safety guide', the code of practice for safety at street works and road works, the traffic signs manual and the road safety good practice guide. All traffic management detailed in this plan will be delivered in accordance with the code of practice for safety at street works and road works following approval from the relevant highway authority.

## VENUE

The site is in the London Borough of Enfield, which adjoins the London Borough of Haringey at Leaside Rd.



### SITE ACCESS GATES

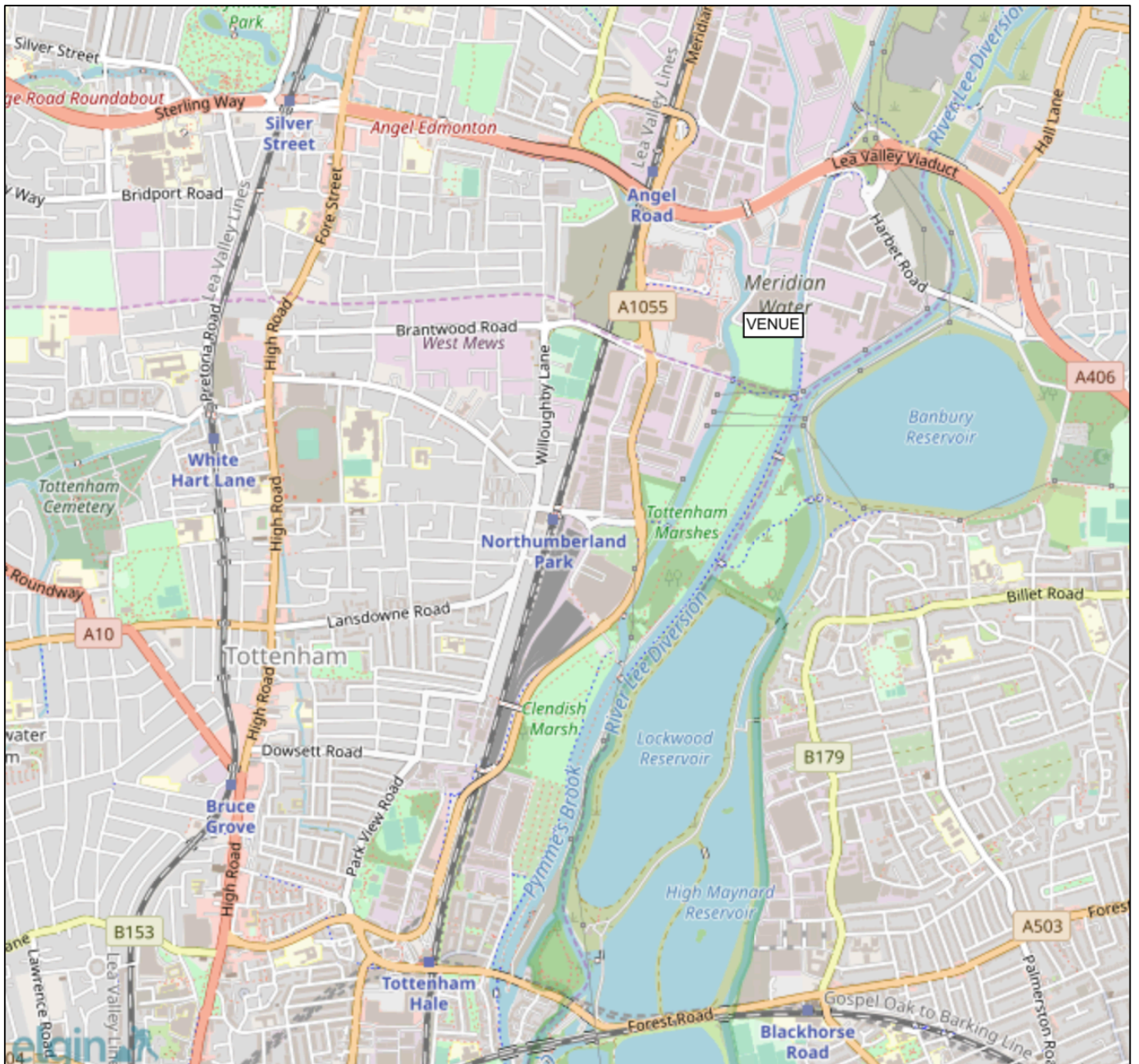
The site has two primary access points:

Access A: Leaside Rd

Access B: Argon Rd // Orbital Business Park

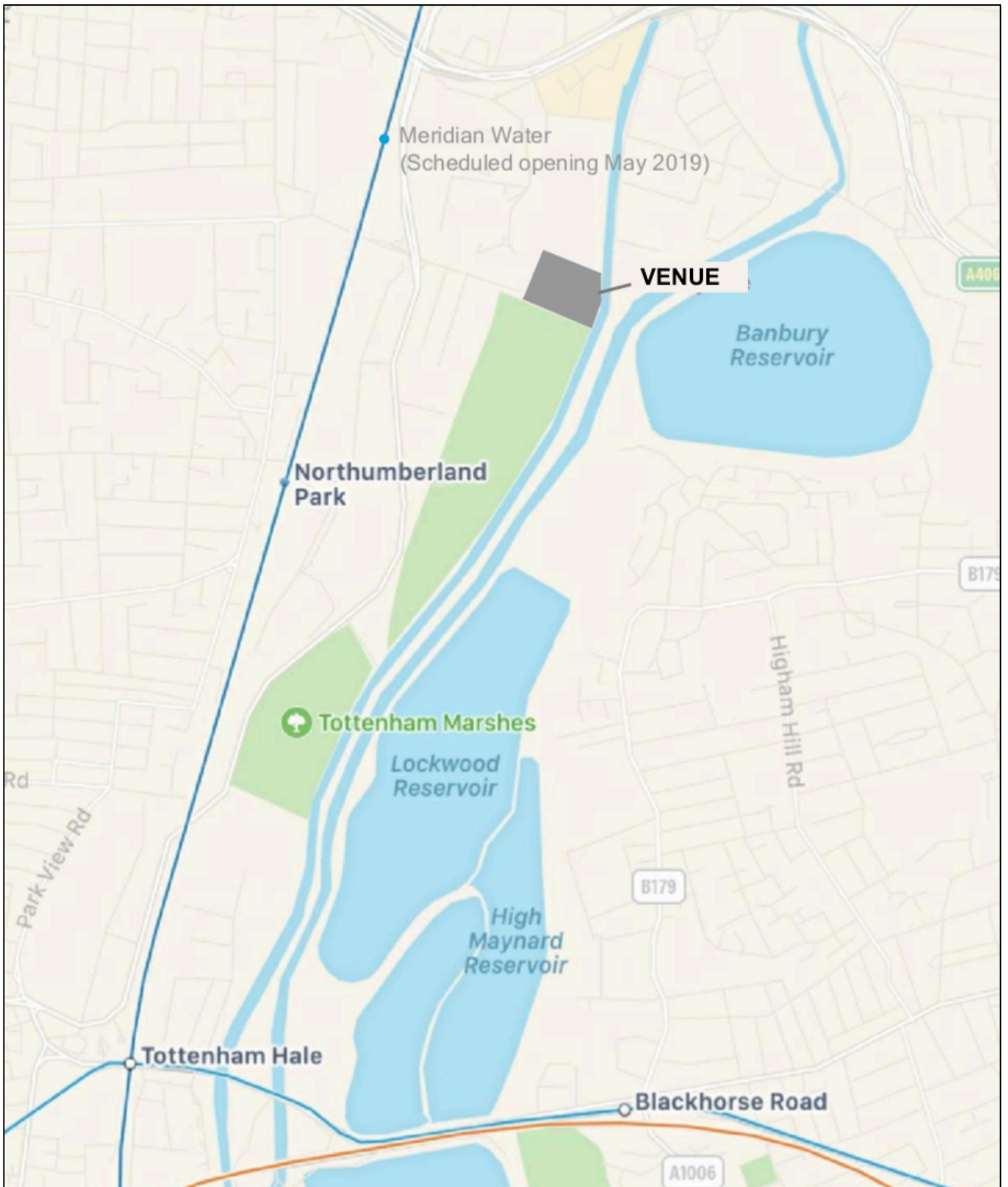
## ROAD NETWORK

The venue is in the London Borough of Enfield, South of the A406, East of the A1055, Watermead/Meridian Way. The site can be accessed via access A on Leaside Rd or access B on Argon Rd.



## TRANSPORT LINKS

The nearest transport hubs to the venue are Meridian Water Station, 0.4 miles from the venue, Northumberland Park Station, 0.7 miles from the venue and Tottenham Hale Station, 1.5 miles from the venue.





## MERIDIAN WATER STATION

Meridian Water station is 0.4 miles from the venue and is accessed via Meridian Way.

### Provisional Timetable – Starting 9 September 2019

<b>SATURDAYS</b>	<b>STRATFORD(d)</b>	<b>MERIDIAN WATER(a)</b>
First Train	06.16	06.31
Last Train	22.46	23.01
Frequency	Half-hourly	
<b>SUNDAYS</b>		
First Train	08.54	09.09
Last Train	22.24	22.39
Frequency	Half-hourly	
<b>WEEKDAYS</b>		
First Train	05.46	06.01
Last Train	22.46	23.01
Frequency	Half Hourly	Additional stopping service in peaks

<b>SATURDAYS</b>	<b>MERIDIAN WATER(d)</b>	<b>STRATFORD(a)</b>
First Train	06.38	06.53
Last Train	23.08	23.23
Frequency	Half-hourly	
<b>SUNDAYS</b>		
First Train	08.15	08.30
Last Train	22.45	23.00
Frequency	Half-hourly	
<b>WEEKDAYS</b>		
First Train	06.22	07.23
Last Train	23.08	23.23
Frequency	Half Hourly	Additional stopping service in peaks

### Event Special Timetable

Following an event planning meeting with Greater Anglia held on 28/5/19, Greater Anglia to develop special event timetable for when events are planned to take place at the venue, this timetable would involve the stopping of additional mainline services at the station. Consultation continuing with GA, with a planning meeting scheduled for 11/7/19 to discuss event timetables and service capacities.

### Example Event Special Timetable – Field Day Festival 2019

The below timetable shows the event specific timetable that was initiated for Field Day festival.

### GREATER ANGLIA // MERIDIAN WATER SERVICES

#### FRIDAYS

#### SOUTHBOUND (TOWARDS CENTRAL LONDON)

FRIDAYS	22.30 – 22.45	22.45 – 23.00	23.00 – 23.15	23.15 – 23.30	23.30 – 23.45	23.45 – 00.00	00.00 – 00.15	00.15 – 00.30	
Number of trains*	1	3	2	2	2	1	3	1	
Available train capacity (estimated)	800 - 1,000	2,400 - 3,000	1,600 - 2,000	1,600 - 2,000	1,600 - 2,000	800 - 1,000	2,400 - 3,000	800 - 1,000	

\*Last train: 00.16

#### NORTHBOUND (TOWARDS BROXBOURNE, HERTFORD EAST, BISHOPS STORTFORD, CAMBRIDGE)

FRIDAYS	22.30 – 22.45	22.45 – 23.00	23.00 – 23.15	23.15 – 23.30	23.30 – 23.45	23.45 – 00.00	00.00 – 00.15	00.15 – 00.30	
Number of trains*	0	1	1	2	1	0	2	0	
Available train capacity (estimated)		800 - 1,000	800 - 1,000	1,600 - 2,000	800 - 1,000		800 - 1,600		

\*Last train: 00.13

#### SATURDAYS

#### SOUTHBOUND (TOWARDS CENTRAL LONDON)

FRIDAYS	22.30 – 22.45	22.45 – 23.00	23.00 – 23.15	23.15 – 23.30	23.30 – 23.45	23.45 – 00.00	00.00 – 00.15	00.15 – 00.30	
Number of trains*	1	3	2	2	2	0	2	0	
Available train capacity (estimated)	800 - 1,000	2,400 - 3,000	1,600 - 2,000	1,600 - 2,000	1,600 - 2,000	800 - 1,000	2,400 - 3,000	800 - 1,000	

\*Last train: 00.13

#### NORTHBOUND (TOWARDS BROXBOURNE, HERTFORD EAST, BISHOPS STORTFORD, CAMBRIDGE)

FRIDAYS	22.30 – 22.45	22.45 – 23.00	23.00 – 23.15	23.15 – 23.30	23.30 – 23.45	23.45 – 00.00	00.00 – 00.15	00.15 – 00.30	
Number of trains*	0	1	0	2	1	0	2	0	
Available train capacity (estimated)		800 - 1,000		1,600 - 2,000	800 - 1,000		800 - 1,600		

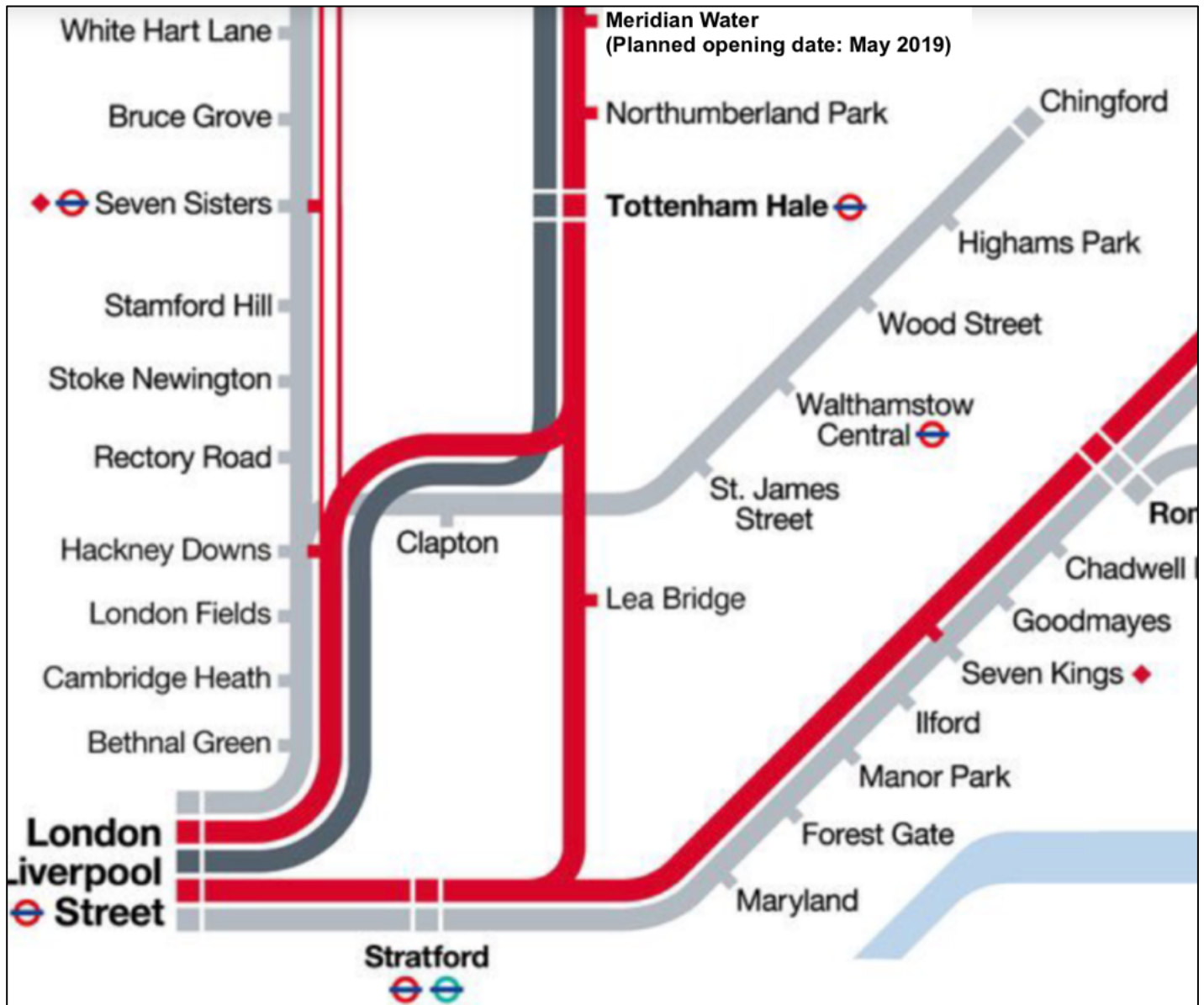
\*Last train: 00.13

### Train Capacity

Fridays - Working on a train capacity of 800-1,000 persons per train, the total train capacity southbound after 23.00 on Friday is estimated to be between 8,800 – 11,000, and the total capacity northbound is estimated to be between 4,800 – 6,000.

Saturdays - Working on a train capacity of 800-1,000 persons per train, the total train capacity southbound after 23.00 is estimated to be between 6,400 – 8,000, and the total train capacity northbound is estimated to be between 4,000 – 5,000.

Meridian Water – Greater Anglia Route Map



## TOTTENHAM HALE STATION

Tottenham Hale station is 1.5 miles from the event site. The Victoria line serves Tottenham Hale underground station with a direct service into and out of central London. Tottenham Hale is also connected to the national rail network and is served by Greater Anglia services from London Liverpool St and Stratford, and is on the Stansted Express line from London Liverpool St.

## TOTTENHAM HALE // LONDON UNDERGROUND

### Service Capacity

On Fridays and Saturdays, the London Underground Victoria Line runs 24 hours from Tottenham Hale. The station has a regular service through central London, with up to 34 trains per hour during peak periods. During off peak periods and overnight the service level reduces. From 22.45 the service level begins to decrease, at 23.15 the service reduces further and from 00.30 onwards the service frequency reduces to a service every 10 minutes to central London.

Monday to Thursday, the last train from Tottenham Hale to Brixton is at 00.14, and on Sundays it is at 23.33.

### Underground Station Capacity

Works are currently taking place on the pedestrian access to the station. The station has a maximum available capacity of 119 persons per minute until these works are completed. Once completed, it is estimated that station capacity will increase to 150 persons per minute, with the single down escalator becoming the limiting factor.

### Tottenham Hale - London Underground Victoria Line (Zone 3)



## TOTTENHAM HALE // NATIONAL RAIL

Tottenham Hale is served by the West Anglia Mainline, with regular services to and from London Liverpool Street and Stratford.

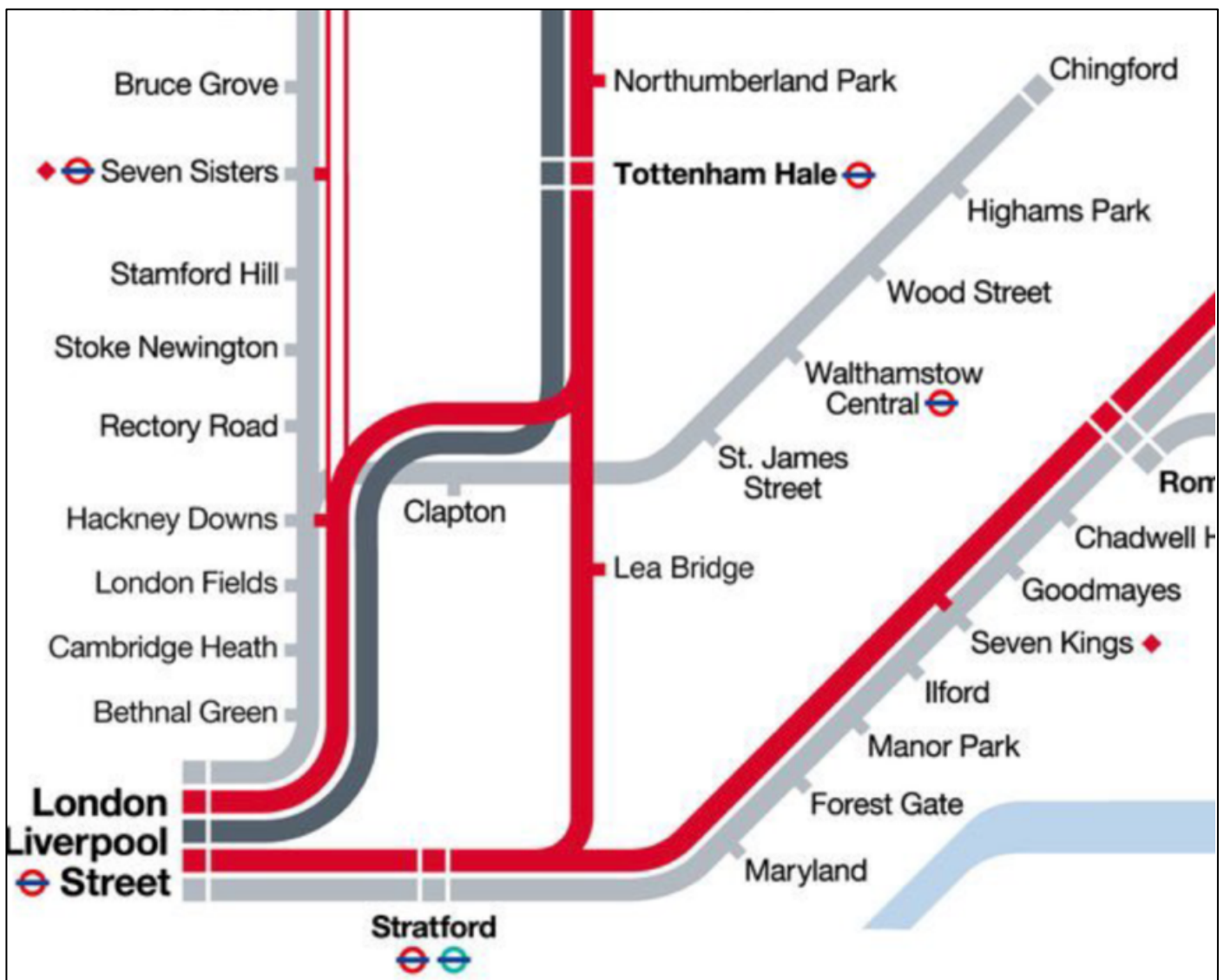
### Service Capacity

During peak periods the station is served by up to 8 trains an hour to / from London Liverpool St and 2 trains per hour to / from Stratford. A 10-car train has capacity for in the region of 1,000 passengers.

### Station Capacity

Based on information provided by Greater Anglia, the station has capacity to process in excess of 1,000 persons in a 15-minute period.

## Tottenham Hale – Greater Anglia Route Map



## OTHER STATIONS

Northumberland Park, Silver Street, White Hart Lane, Blackhorse Rd and Seven Sisters stations are within walking distance of the venue, however are not planned to be used as primary transport hubs.

## **TfL BUSES**

The nearest bus stops to the venue are located on Glover Drive, the A406, Northumberland Park and Tottenham Hale bus station.

### **Glover Drive Bus Routes**

Route number: 192 // Route: Tottenham Hale <> Enfield

Route number 341 // Route: Glover Drive <> Waterloo/County Hall

### **North Circular Bus Routes**

Route number: 34 // Barnet High St / Barnet Church <> Walthamstow Bus Station

Route number: 444 // Chingford Station <> Turnpike Lane Bus Station

### **Northumberland Park Bus Routes**

Route number: 476: Euston Station <> Northumberland Park

Route number: W3: Finsbury Park Station <> Northumberland Park Bus Stand

### **Tottenham Hale Bus Station Routes**

Route number: 76 // Route: Waterloo <> Tottenham Hale

Route number: 123// Route: Ilford <> Wood Green

Route number: 230 // Route: Wood Green <> Upper Walthamstow

Route number: N73 // Route: Oxford Circus <> Walthamstow Central

Route number: W4 // Route: Oakthorpe Park <> Tottenham Hale

Route number: 41 // Route: Archway <> Tottenham Hale

Route number: N41 // Route: Trafalgar Sq <> Tottenham Hale

Route number: 192 // Route: Tottenham Hale <> Enfield

## **PARKING**

30 parking spaces are available on site for staff and accessible parking only.

## **CYCLING**

A cycle parking provision will be made available on site, with a capacity for 50 bicycles.

# TRAFFIC AND TRANSPORT MANAGEMENT PLAN

---

## TRAFFIC MANAGEMENT PLAN BREAKDOWN

This section of the document will examine the proposed traffic management measures to be put in place to facilitate the safe access of persons to and from the event site. This section is divided into the following sub-sections:

### 9,999 capacity events, finishing at 23.00

- Predicted mode shares\*
- Overview of traffic management provisions

\*All mode shares projected in this section are estimates for planning purposes only.

\*Full traffic management drawings to be submitted for approval by LB Enfield and LB Haringey highways departments following consultation with the LB Enfield Safety Advisory Group. Images of proposed traffic management contained in this document are for reference only.

## ACCESS TO EVENT SITE

Provisions detailed in this section are based on the following gate usage:

Access A: All public pedestrian access to site

Access B: Production traffic only – No public pedestrian access



## 9,999 CAPACITY EVENTS

**TABLE 2: 9,999 CAPACITY EVENTS // MODE SHARE PROJECTION // SHOWS FINISHING WHILE MERIDIAN WATER IS OPEN**

TRANSPORT TYPE	MODE SHARE (INGRESS)	NUMBER OF ATTENDEES	NOTES
National Rail / Meridian Water	70%	7,000	Northbound / Southbound split to be added
Taxi	18%	1,800	Estimated
Cycle	0.5%	50	Estimated
Walk	2%	200	Estimated
Bus	7.5%	750	Estimated
Drive	2%	200	Estimated

\*Event specific traffic plan to be developed for events where modal split is likely to differ significantly from the above.

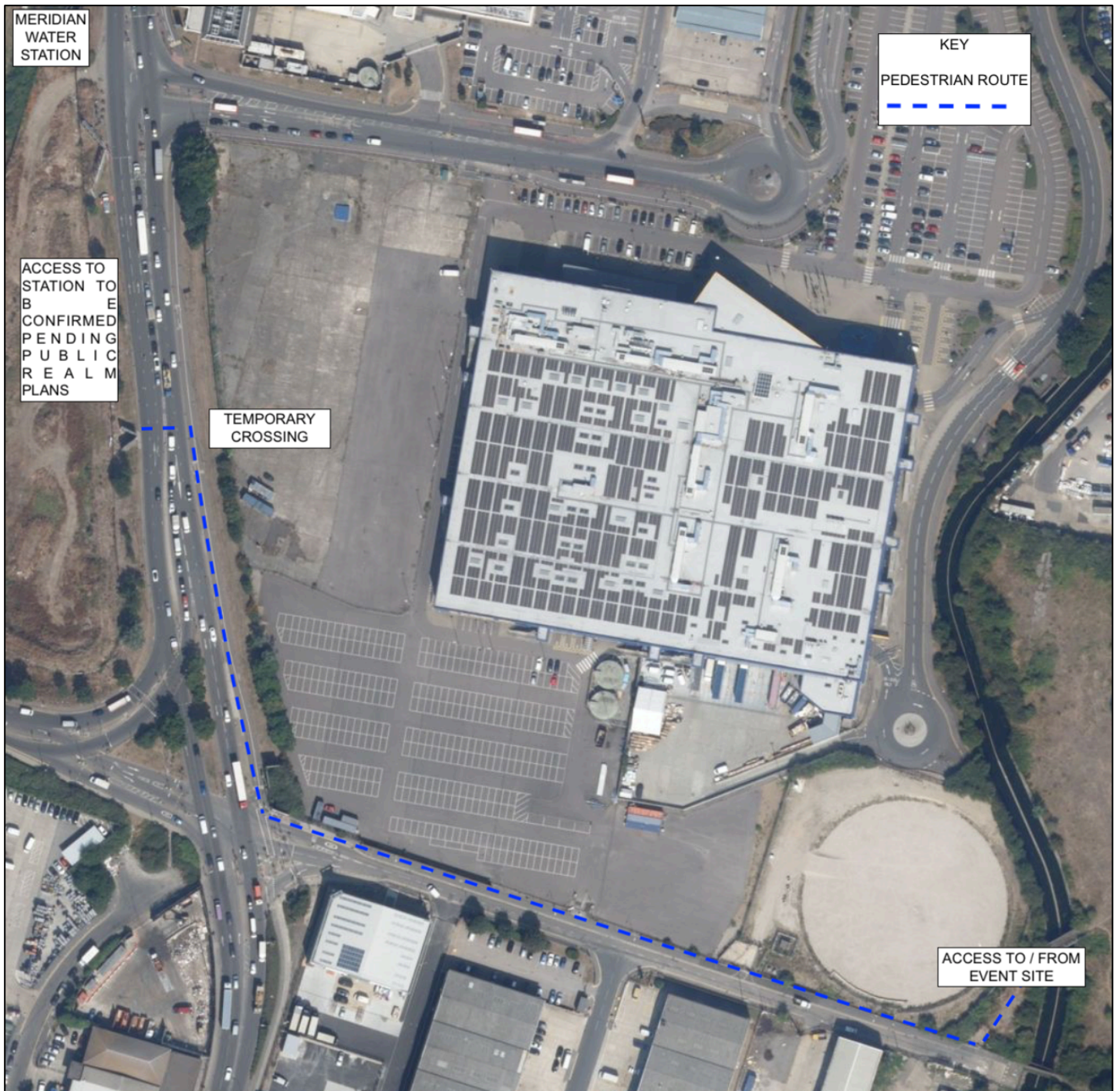
\*Figures stated above do not include no shows.

### OVERVIEW

It is projected that Meridian Water will be the primary transport hub for the event. In the event that Meridian Water does not have the service capacity to clear the audience at the end of the event, shuttle buses to operate from the event pick up point to Tottenham Hale station.



## OVERVIEW OF PEDESTRIAN ROUTE TO / FROM VENUE



## CROWD CONTROL BARRIER

Crowd control barrier will be deployed along the northern footway of Leaside Rd, the eastern footway of Meridian Way, between Glover Drive and the temporary crossing and at Meridian Water station, to prevent pedestrians walking in the carriageway and to support crowd control measures.

**TABLE 3: 9,999 CAPACITY EVENTS // OVERVIEW OF PROPOSED TRAFFIC MANAGEMENT PROVISIONS**

**PROVISION**

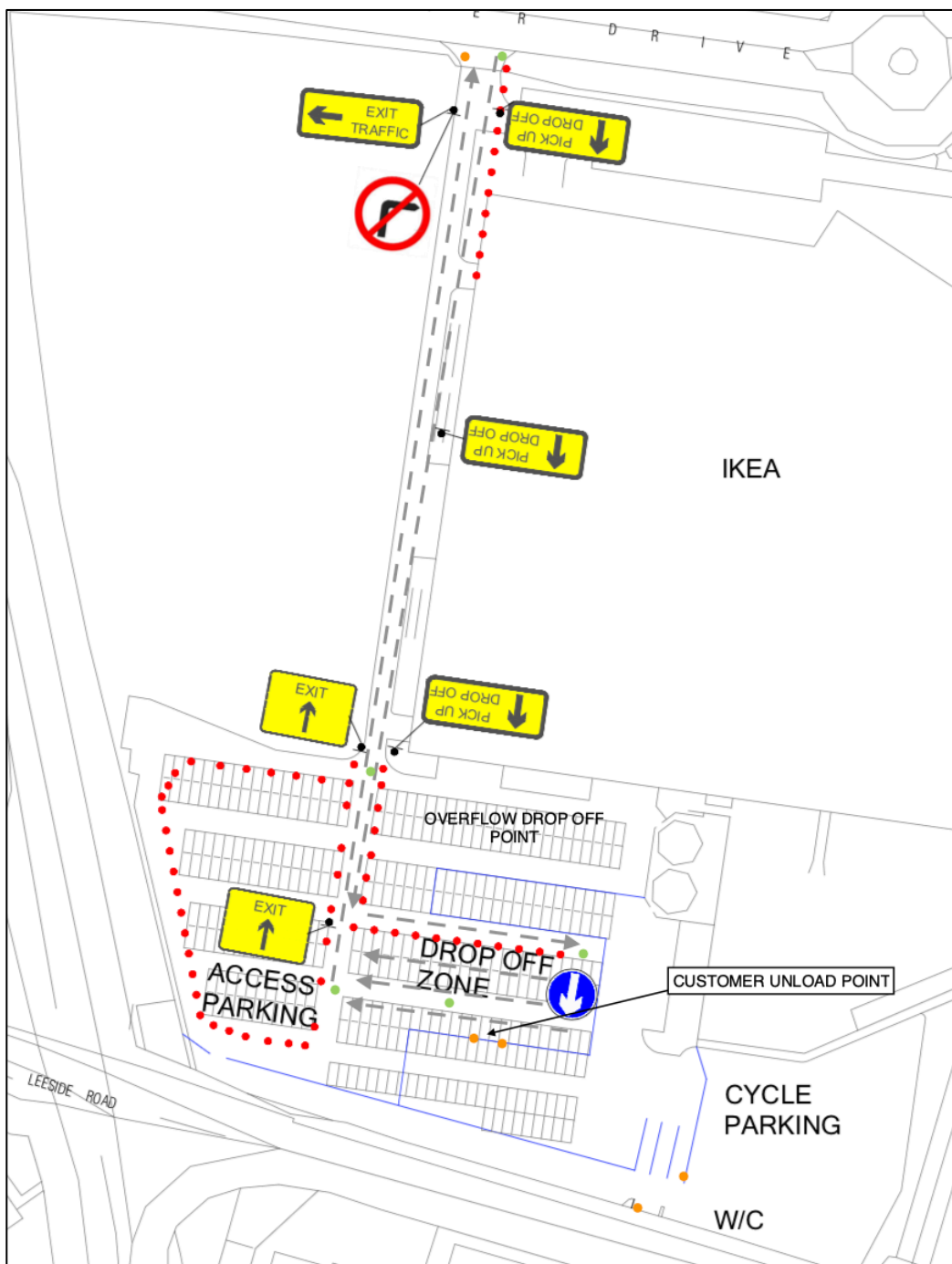
**Item: Designated pick up and drop off point**

Description: A designated area for taxis to pick up and drop off // Location: Ikea overflow car park – Subject to approved land use

**Draft ingress phase operational plan**

KEY

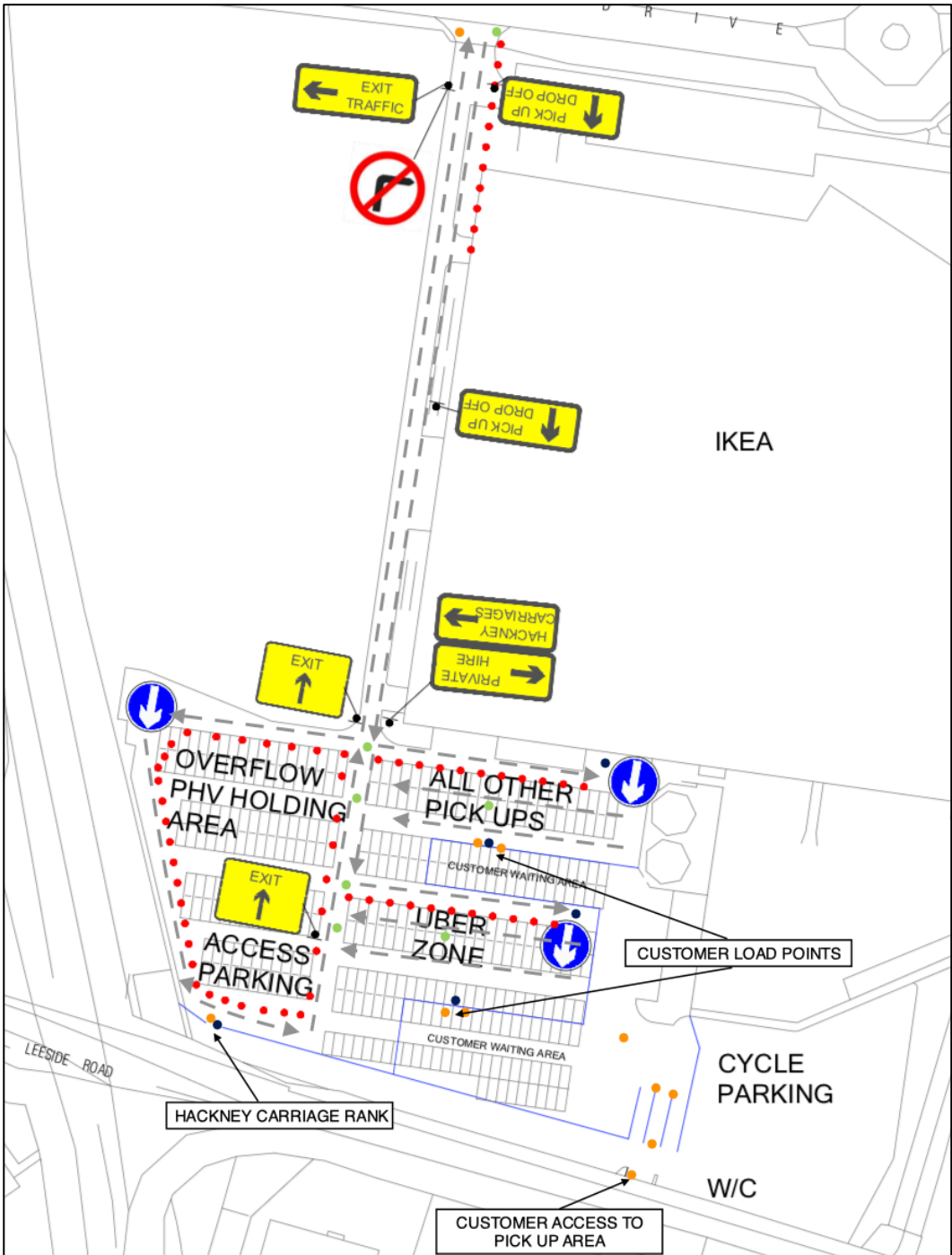
- DIRECTION OF TRAFFIC FLOW →
- TEMPORARY FENCING —
- SECURITY POSITION (TBC) ●
- TRAFFIC POSITION (TBC) ●



# Draft egress phase operational plan

**KEY**

- DIRECTION OF TRAFFIC FLOW ----->
- TEMPORARY FENCING \_\_\_\_\_
- SECURITY POSITION (TBC) ●
- TRAFFIC POSITION (TBC) ●



\*Chapter 8 compliant signage schedule to be added. \*\*staff positions may be added / removed – for consultation purposes only. \*\*\*Area layout to be confirmed following confirmation of land use

### Example Chapter 8 Signage



### Area capacity

Ingress queue lane – 57 vehicles

Egress route – 31 vehicles

PHV waiting area – 90 vehicles

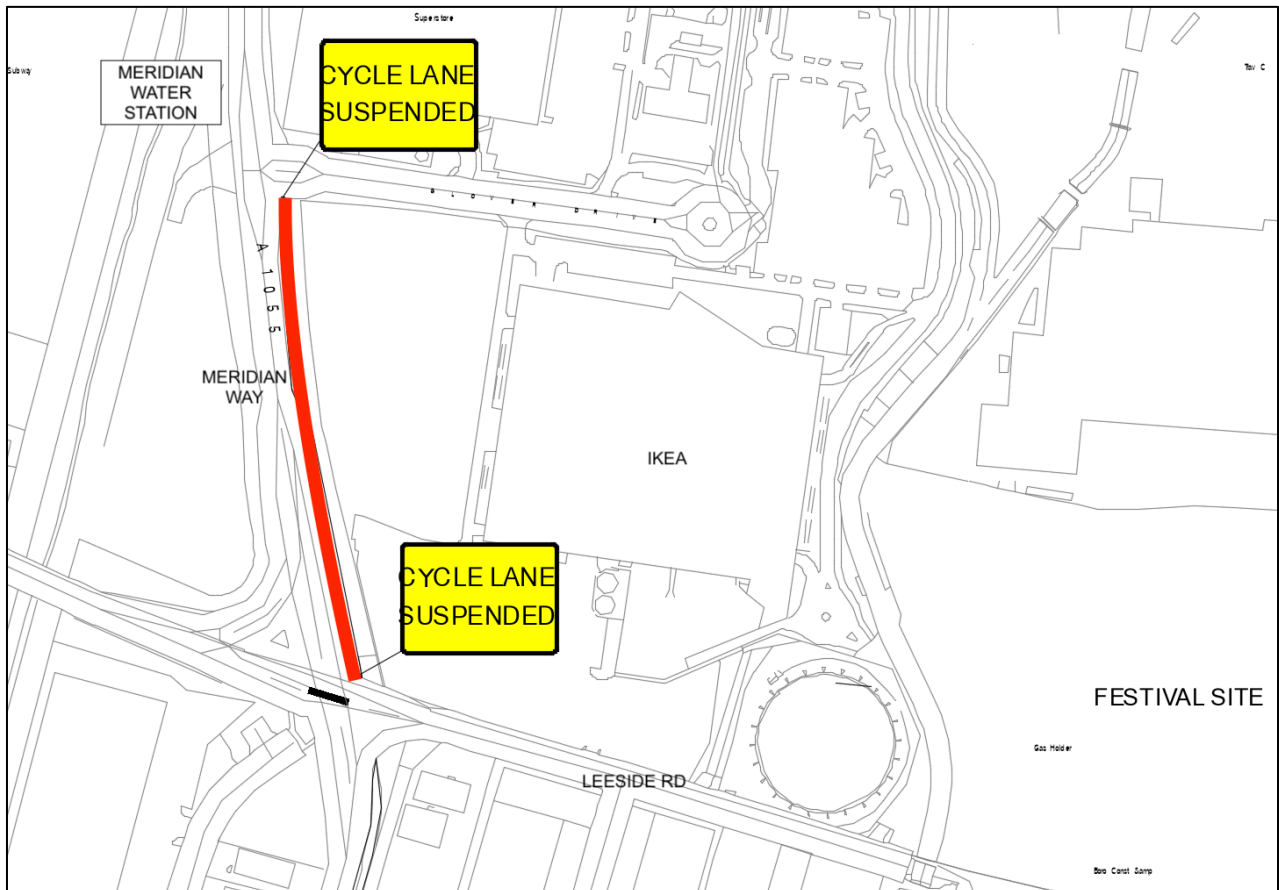
Hackney carriage rank – 46 vehicles (in x2 lanes)

### Item: Cycle Lane Suspension // Meridian Way

Description: Cycle Lane suspension - from Leaside Rd to Glover Drive, to increase footway space for persons accessing and exiting the event site via Meridian Water station.

Timings: Peak times only

Location:



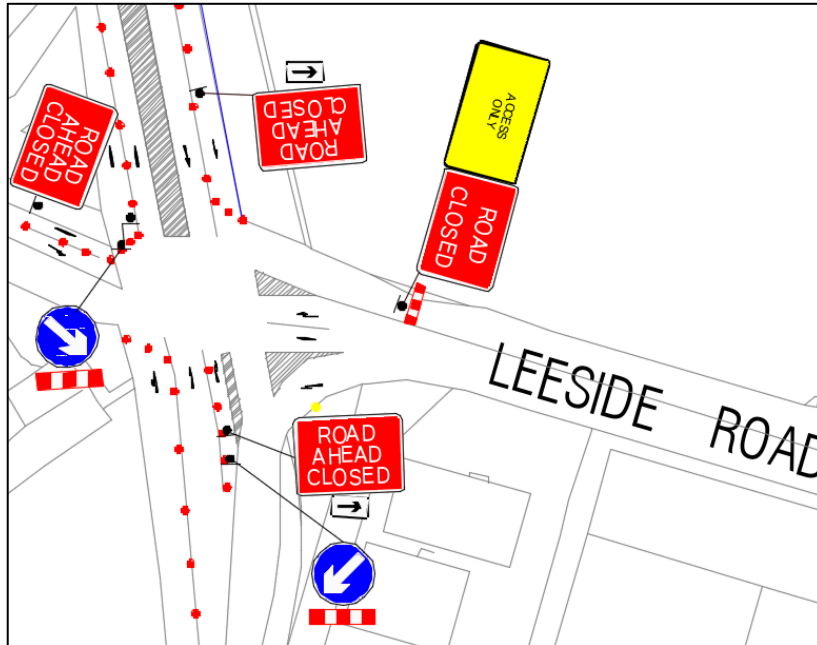
\*Cyclists please dismount signs to be added



**Item: An access only road closure traffic staffing at Leaside Rd**

Description: To facilitate access to businesses but prevent access for taxis.

Location:

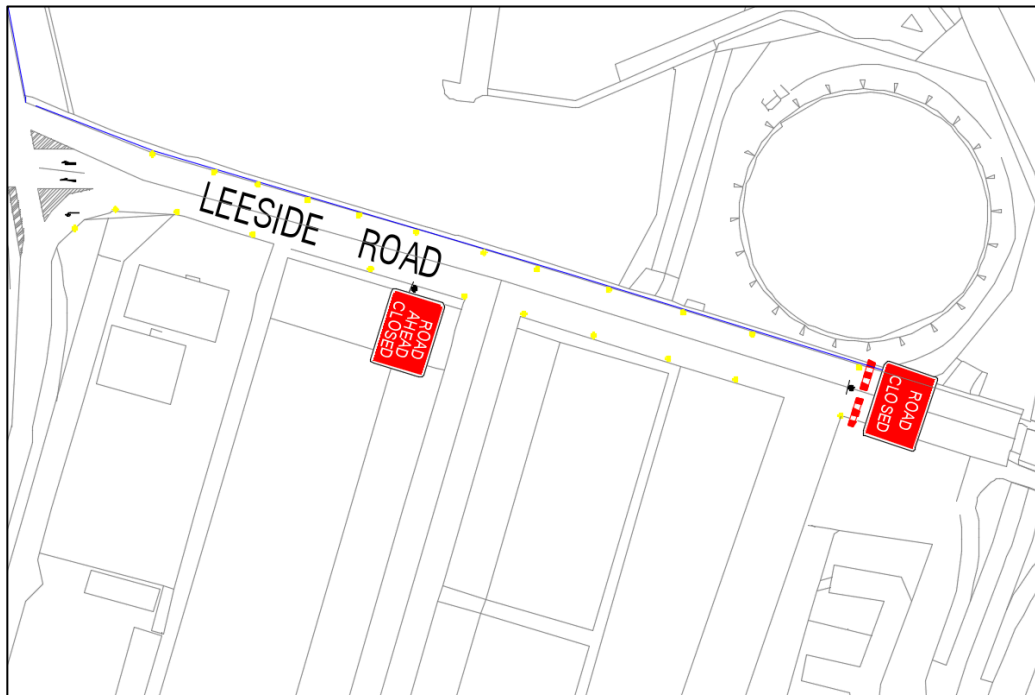


Notes:

- Traffic management staff to be in place to manage access
- In the event of a crowd breach into the carriageway on Leaside Rd, a full closure on vehicle access to be initiated until the carriageway is cleared.

**Item: Full road closure of a section of Leaside Rd.**

Location:



Notes:

- Closure in place to prevent vehicles driving to access gate A.
- No waiting cones to be placed on Leaside Rd to prevent congestion.
- Access to substation maintained at all times.
- Closure length: 60m.

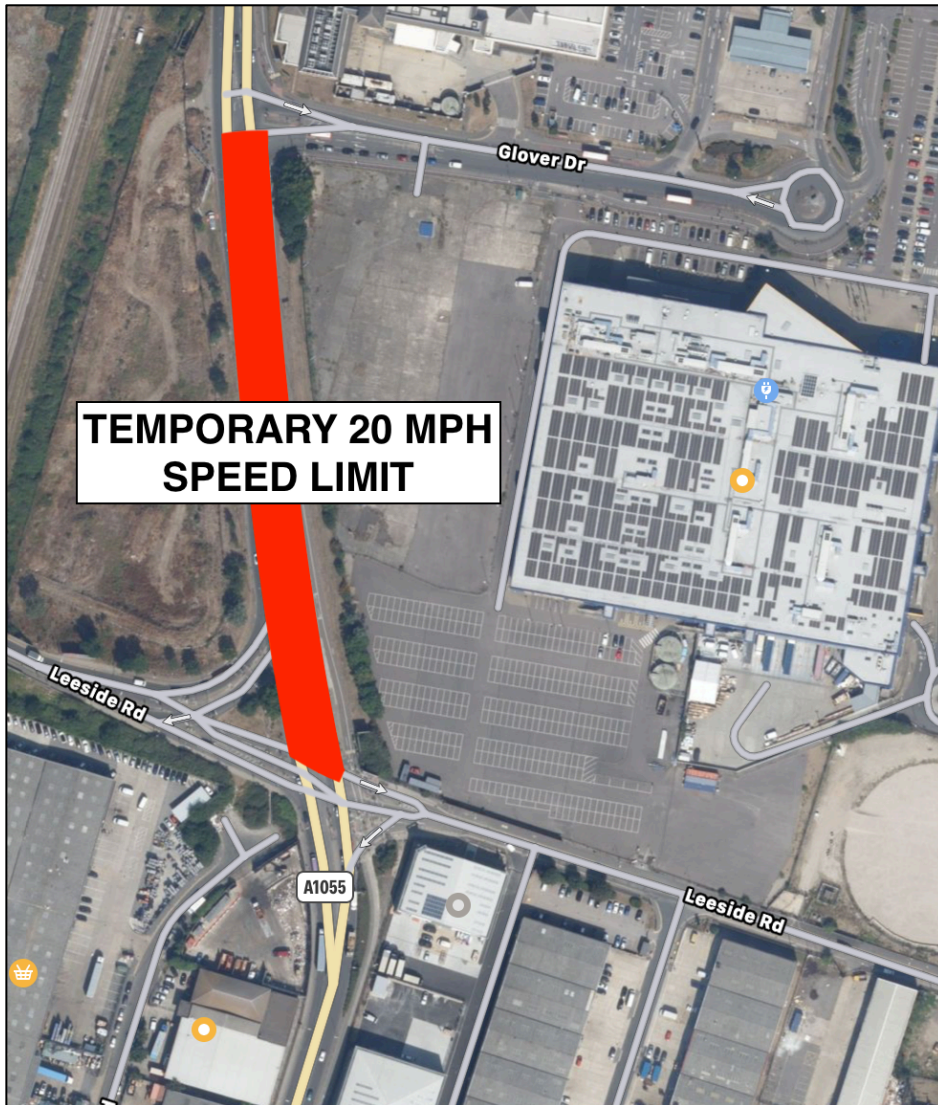
**Item: Watermead Way/Meridian Way – Reduction in speed limit**

Description: Temporary 20mph Speed Limit.  
Meridian Way, from the junction with Leaside Rd to the junction with Glover Drive.

Existing Speed Limit // Temporary Speed Limit



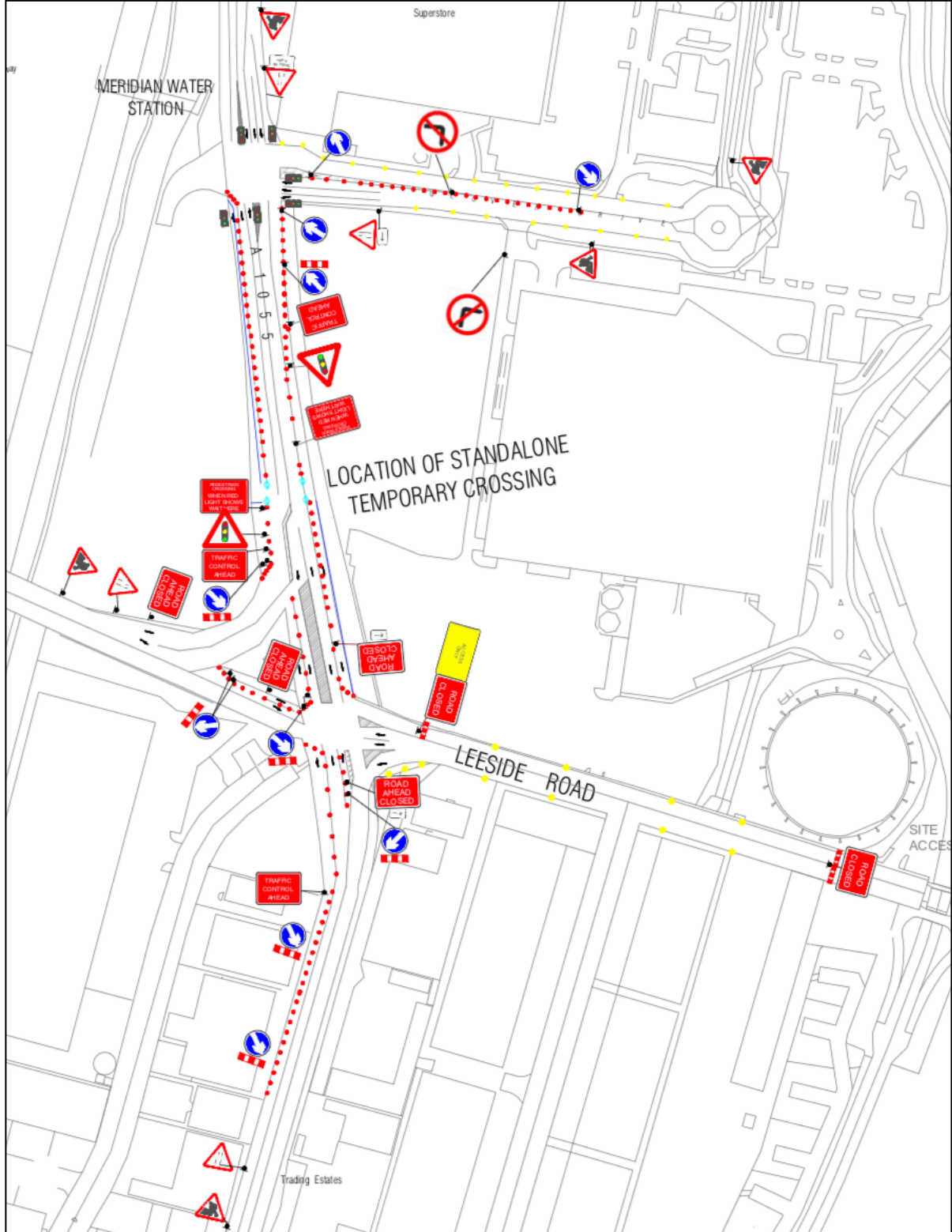
**Speed reduction area**



**Item: Pedestrian Crossing Facility // Meridian Way and TM Overview**

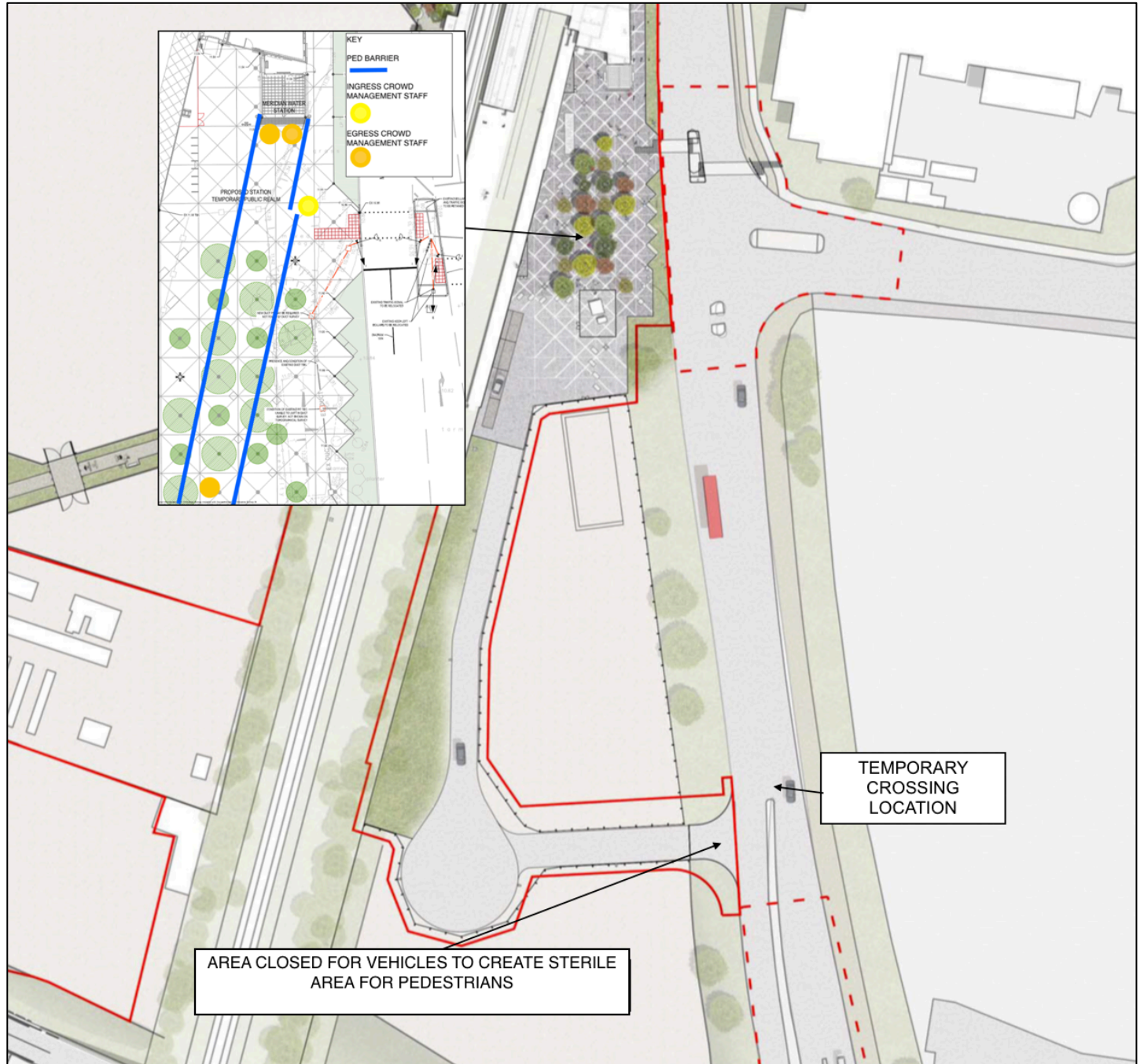
Description: A temporary signalled standalone pedestrian crossing is proposed located between Leaside Rd and Glover Drive to facilitate a safe crossing point of Meridian Way for attendees routing from/to Meridian Water.

Location



## Meridian Water Station Overview

Pending approval, the teardrop site that forms the vehicular access to Meridian Water station from Leaside Rd will be closed to vehicles when there are events taking place at the venue. Crowd barrier will be deployed to form queue systems at the station entrance.

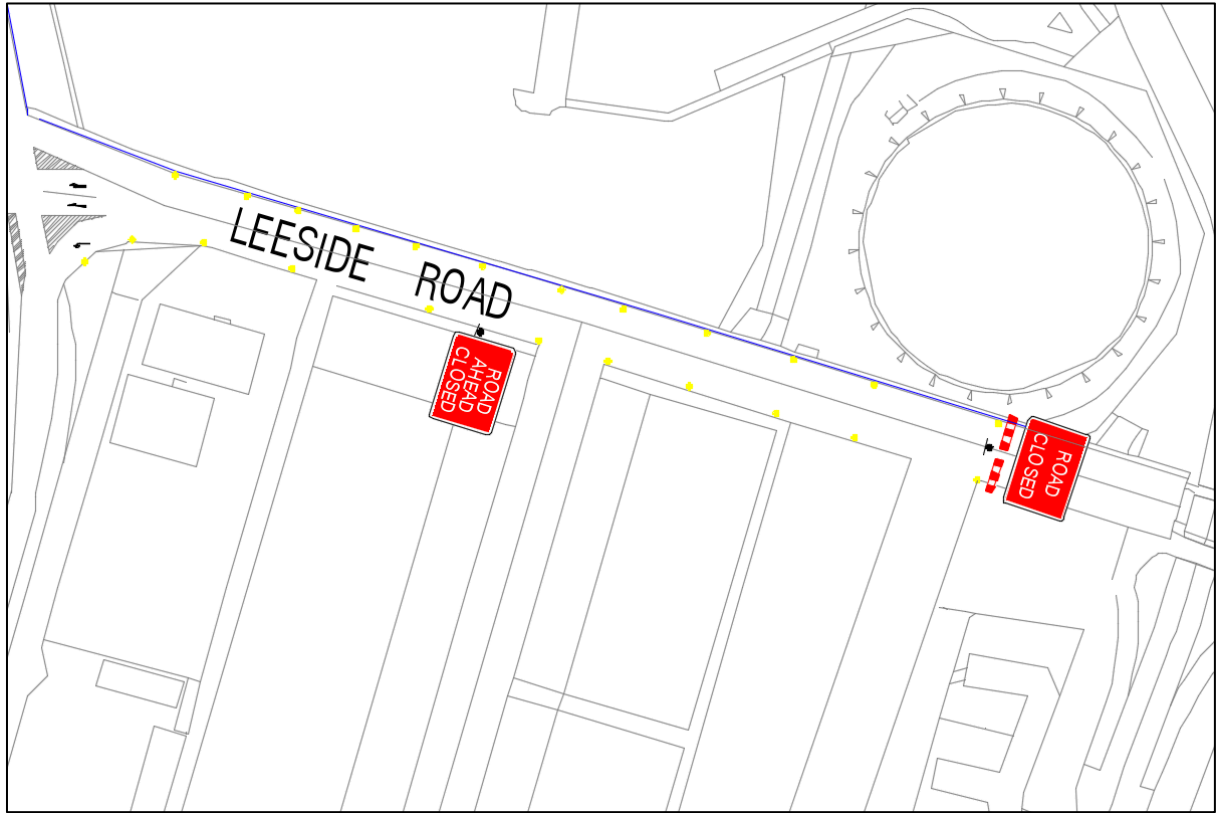




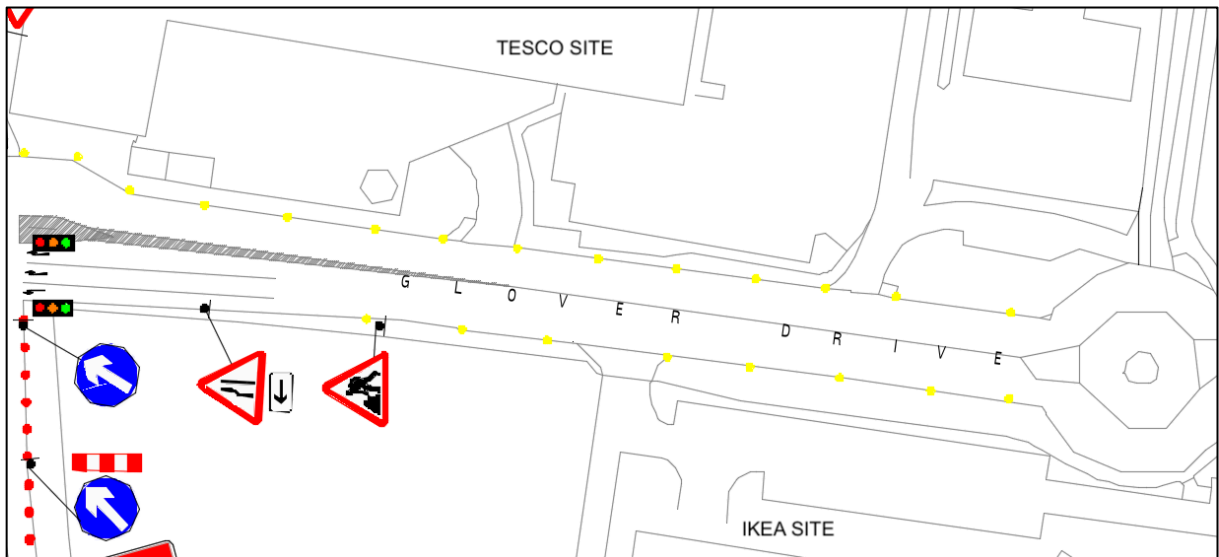
## Prohibition of waiting

Locations:

Leeside Rd (both sides) from the junction with Meridian Way for a distance of 250m to the east.



Glover Drive (both sides) from the junction with Meridian Way for a distance of 180m to the east.



**Item: Restricted access Orbital business park (Private Rd)**

Description: Access to Orbital business park to be restricted. Subject to consultation with Enfield Council a permit system to be developed to allow access to be managed when there are events taking place at the venue.



## EMERGENCY ACCESS

Two emergency access routes will be in operation for the venue:

- Route 1 | Access B, Orbital Business Park, Argon Rd
- Route 2 | Access A, access road from Leaside Rd via bridge to venue

## CONSIDERATION OF OTHER LOCAL EVENTS AND WORKS

Consultation to take place via the safety advisory group regarding upcoming events and works in the area surrounding the venue.

## CONTINGENCY PLANNING

### TABLE 4 – CONTINGENCY PLANS

<b>CONTINGENCY PLAN TABLE</b>
<b>Rail engineering works resulting in no train services calling at Meridian Water</b>
<p>In the event of a planned closure of the national rail network resulting in no train services calling at Meridian Water station, the following options would be considered as a means of facilitating access of persons to and from the venue:</p> <ul style="list-style-type: none"><li>- A stewarded walking route to the venue from Tottenham Hale.</li><li>- Designated event shuttle buses to Tottenham Hale.</li></ul> <p>Additional traffic management measures and traffic calming may be needed to facilitate a safe walking route to the venue from Tottenham Hale. Traffic management plans for this will be included in a future version of this document following consultation with the SAG.</p>
<b>Crowd dispersal on Leaside Rd at access A</b>
<p>In the event of crowds dispersing on Leaside Rd, between Access A and the junction of Leaside Rd with Meridian Way, a full road closure of Leaside Rd to be installed until crowds have re-joined the footway.</p>

---

## SUMMARY

---

This document provides an overview of the transport network surrounding the Drumsheds venue in the London Borough of Enfield and goes on to detail the traffic management provisions proposed to be put in place for events with a capacity of up to 9,999, with a finish time of 23.00.

This document is in draft form as a working document to be developed through a process of engagement through the London Borough of Enfield Safety Advisory Group, which includes stakeholders from: London Underground; Greater Anglia Trains; Metropolitan Police; British Transport Police; LB Enfield Highways; LB Haringey Highways and TfL Buses.

## HIGHWAYS LICENSES AND APPLICATIONS

---

To be included in a future version of this document following consultation with highways authority.

## NOTES

---

This TMP is in draft form and remains a draft until the document status is changed to 'final'. It is important to note that while the document reaches a point whereby all the agencies agree to the document, the document and its contingencies must remain flexible to accommodate any changes that may occur during the implementation stage of the plan.

Detailed traffic management drawings for all proposed traffic management to be submitted and approved by the relevant highway authority prior to events taking place.